

7 Tips & Tricks

- Keep **Donor** and **Service Antennas** separated/isolated from each other for best performance
- For best performance, the cable between the **Donor Antenna** and GO unit should be as short as possible
- Use sealant if any connections are exposed to elements

8 Registration Instructions



YOU MUST REGISTER THIS DEVICE BEFORE IT WILL WORK

To install your Telstra Go Mobile Smart Signal Repeater, follow the instructions in the Quick Start Guide. To register your Telstra Go Mobile Smart Signal Repeater follow the instructions below:

STEP 1



The status indicator LED

Telstra GO Smart Signal Repeater

The status indicator LED will be blinking RED. Wait for the system to complete the network selection which **can take between 5 to 7 minutes**. When complete, the user interface will indicate that **registration is required from the Wave App**.

STEP 2



Smartphone or Tablet

With your smartphone or tablet, complete registration by using the Cel-Fi WAVE application (Android or iOS).*

Connect/Pair to Smart Signal Repeater

OR



Cel-Fi Desktop Application

Optionally, use the Cel-Fi desktop application to complete registration.

Connect to Smart Signal Repeater

STEP 3: Go to the **App Store** or the **Google Play Store** and search for "Cel-Fi WAVE" to download the free app.



STEP 4: Launch the Cel-Fi WAVE app in **close proximity** to the Telstra GO Mobile Unit.

STEP 5: Once the application has connected to the Telstra GO Mobile Smart Signal Repeater, you will be prompted to register.

* Requires Bluetooth 4.1 and Android 4.3 or above.

STEP 3: From your computer, visit **www.cel-fi.com/software** and download the appropriate desktop application.

STEP 4: Attach a Micro-USB (*not included*) cable from your computer to the Telstra GO Mobile Unit.

STEP 5: Launch the Cel-Fi WAVE desktop application.

STEP 6: Once the application has connected to the Telstra GO Mobile Smart Signal Repeater, you will be prompted to register.

For more information and helpful videos about the installation and registration of the Telstra GO system, please visit www.cel-fi.com/register. As part of the registration process Telstra will collect your private information including name, contact details and location. Please see our Privacy Policy at <https://www.telstra.com.au/privacy/privacy-statement> for more details.



Copyright © 2019 by Nextivity, Inc. U.S. Patents pending. All rights reserved. The Nextivity and Cel-Fi logos are registered trademarks of Nextivity Inc. All other trademarks or registered trademarks listed belong to their respective owners. Designed by Nextivity Inc in California. qsg_go-mobile-telstra-eng_19-1105



Telstra GO Mobile Smart Signal Repeater Quick Start Guide



Telstra GO is an evolved cellular repeater design that can amplify cellular signals. Connect a single Donor External Antenna to receive the macro-network signals, and then a single indoor Service Antenna where you need service, and Telstra GO will do the rest automatically once you register.

IN THE BOX

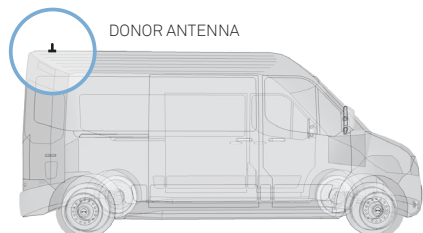
- Telstra GO Mobile Repeater
- Quick Start Guide
- Donor & Service Antenna
- Warranty Card
- Mounting Screws
- 12V CLA Power Supply Unit

For Telstra Support, call:

- 13 2200 or
- 13 2000 for Business Customers
- telstra.com/smartantenna

Telstra GO Mobile Installation

1 Install Donor Antenna

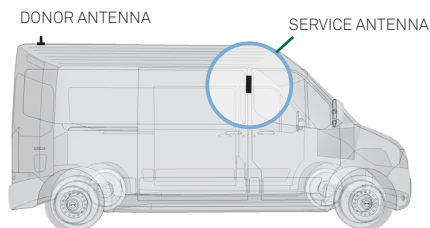


Mount your **Donor Antenna** on the exterior of the vehicle, towards the rear, according to its design, and the type of vehicle it's being used with. Make sure you consider the cable connection to the **Telstra GO** unit with your location choice.



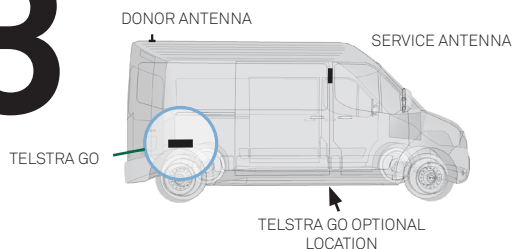
For best performance make sure there is 50cm of metal around the base of the antenna.

2 Install Service Antenna



Install **Service Antenna** in the cab, towards the front, where coverage is needed. Ideally, there should be substantial material, like the metal of the roof, between the **Donor** and **Service Antennas**, to improve isolation.

3 Mount Telstra GO



Find a good mounting location in your vehicle. Location should have airflow and be secure from contact with external objects.

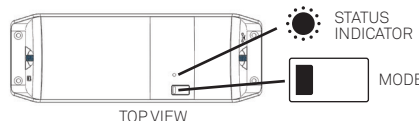
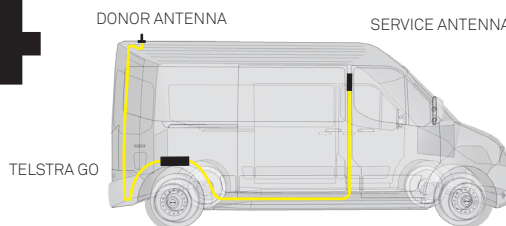
Make sure the unit is within cable range of the 12V power supply on your vehicle.

Best to make sure all cable lengths support the intended mounting location BEFORE permanent mounting.



Do not plug in the power supply into the device until installation is complete.

4 Connect Donor & Service Antennas to the Telstra GO Unit



RIGHT SIDE: Donor Antenna Connector



LEFT SIDE: Service Antenna Connector

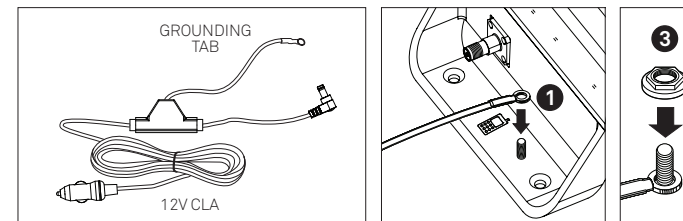
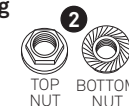
5 Ground the Telstra GO

If your unit has a 12V CLA with a grounding tab on the end, then:

(1) attach that tab to the grounding post on the Telstra GO prior to attaching to power.

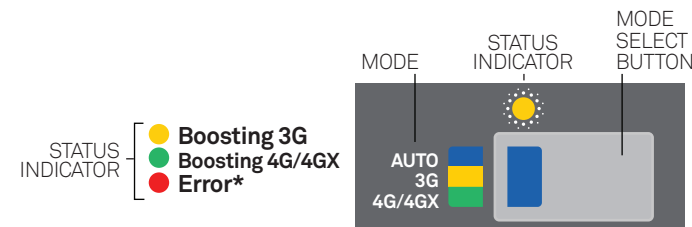
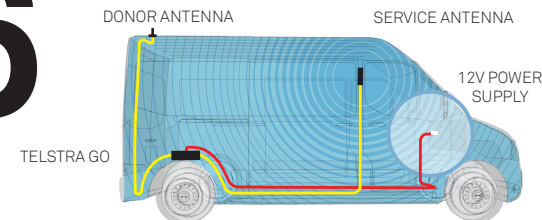
(2) Use the nut (included)

(3) to secure the tab to the unit.



If your **Telstra GO** unit does not include a grounding post, simply attach the grounding tab to any available ground source.

6 Plug in Telstra GO & Select Mode



STATUS INDICATOR

- Boosting 3G
- Boosting 4G/4GX
- Error*

(*NOTE: if Error, go to troubleshooting at cel-fi.com/support)

Press the **MODE** button on the unit to select desired scanning mode. Status Indicator will blink during the setup process, and may take a few minutes to complete.

(OPTIONAL: use your smartphone to select mode. Download the **Cel-Fi WAVE** app, and follow the on-screen instructions.)



Bluetooth